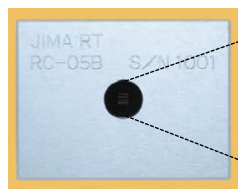


# Operation for Micro-chart *JIMA RT RC-05B*

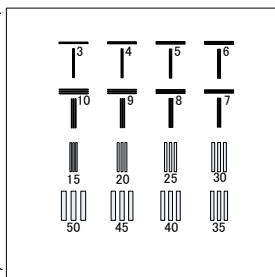
## Operation Manual

It is greatly appreciated your purchasing JIMA RT RC-05B. Please read this operations manual well for proper usage and then, please preserve for future reference

### Appearance



### Patterns Layout



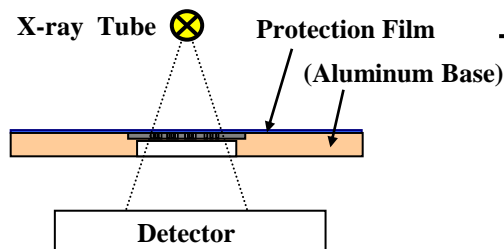
### Specifications

1. Line & Space Width : 3, 4, 5, 6, 7, 8, 9, 10 $\mu$ m ( T : Pattern)  
15, 20, 25, 30, 35, 40, 45, 50 $\mu$ m ( I : Pattern)
2. L/S Width Tolerance : +/- 15% for 3 and 4  $\mu$ m, +/- 10% for L/S 5  $\mu$ m and above
3. Number of Line: 3 lines (2 spaces) for each set
4. Thickness of Absorption material ( Au: Gold ) : > 1.0 $\mu$ m
5. Protection Film : Thickness : 0.05mm (Polyether Film )
6. Whole Dimensions (W x D x T) : 40 x 30 x 5 mm (Al Base)
7. Chip Size (W x D x T) : 8 x 8 x 0.2 mm (Si)
8. Operating Temperature: + 10 $^{\circ}$ C to + 70  $^{\circ}$ C
9. Protection Plastic Case

[ NOTICE ] All of the pattern sizes have been measured by SEM at typical points, and the data are shown in the document of certification

### Testing Method

Please use the test sample by placing the protection-film side toward X-ray source point as shown in schematic figure at the right.



## Notice of Operation

- Do not disassemble the aluminum holder at all.

*The ability of the test sample cannot be maintained.  
Once disassembled, it is impossible to assemble again.*

- For storage, avoid a place of high-temperature and high-humidity.

*If possible, keep it in desiccators.*

- Don't touch the surface of the protective film.

*If peeled off, the slit may be damaged.*

- Don't physically shock the test sample.

*The integrity cannot be maintained after shock.*

- Please utilize this test sample to maintain or to control the capability of the X-ray system.

- It is impossible to re-calibrate or periodically check the test sample,

*It is manufactured by using ultra-fine semiconductor lithography technique and assembled all into one solid piece, so it is impossible to re-calibrate. The protection film was attached after SEM-measurement, so it is impossible to re-measure after assembly.*

- This test sample is expendable.

*If irradiated by X-ray for a long duration, the protective film may be damaged.*

- The thickness of Gold is specified as 1.0  $\mu$ m or thicker. However, the thickness may not be flat, then the image may show difference in color or shading.

- The polarity of image is different depend on X-Ray instruments and set up. Please set up your instrument as desired polarity.

Japan Inspection Instruments Manufacturers' Association



3<sup>rd</sup>. Fl., Kudan Royal Bldg., 3-2-5 Kandajinbo-cho,  
Chiyoda-ku, Tokyo 101-0051 Japan

TEL 03-3288-5080 FAX 03-3288-5081

E-mail rttp@jima.jp URL <http://www.jima.jp>