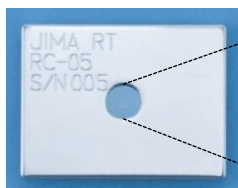


Operation for Micro-chart *JIMA RT RC-05*

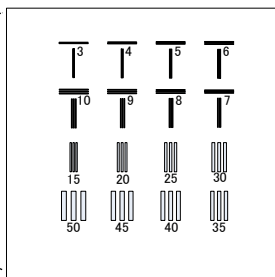
Operation Manual

It is greatly appreciated your purchasing JIMA RT RC-05. Please read this operations manual well for proper usage and then, please preserve for future reference

Appearance



Patterns



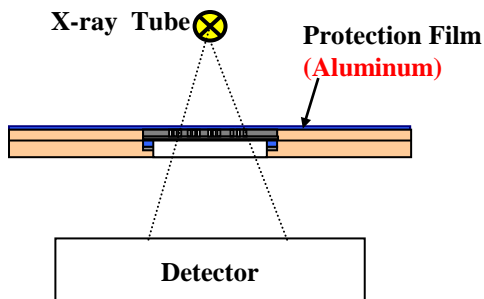
Specifications

1. Whole Dimensions (W x D x T) : 40 x 30 x 5 mm (Al)
2. Chip Size (W x D x T) : 8 x 8 x 0.2 mm (Si)
3. Thickness of Absorption material (Au: Gold) : > 1.0 μ m
4. Protection Film : Thickness : 0.1mm (Aluminum Vapored Film with adhesive)
5. Line & Space Width : 3, 4, 5, 6, 7, 8, 9, 10 μ m (T : Pattern)
15, 20, 25, 30, 35, 40, 45, 50 μ m (I : Pattern)
6. Tolerance : within 10%, [+/- 10%]

[NOTICE] All of the pattern sizes have been measured by SEM at typical points, and the data are shown in the document of certification

Testing Method

Please use the test sample by placing the protection-film side toward X-ray source point as shown in schematic figure at the right.



Notice of Operation

- Do not disassemble the aluminum holder at all.

*The ability of the test sample cannot be maintained.
Once disassembled, it is impossible to assemble again.*

- For storage, avoid a place of high-temperature and high-humidity.

If possible, keep it in desiccators.

- Don't touch the surface of the protective film.

If peeled off, the slit may be damaged.

- Don't physically shock the test sample.

The integrity cannot be maintained after shock.

- Please utilize this test sample to maintain or to control the capability of the X-ray system.

- It is impossible to re-calibrate or periodically check the test sample,

It is manufactured by using ultra-fine semiconductor lithography technique and assembled all into one solid piece, so it is impossible to re-calibrate. The protection film was attached after SEM-measurement, so it is impossible to re-measure after assembly.

- This test sample is expendable.

If irradiated by X-ray for a long duration, the protective film may be damaged.

- The thickness of Gold is specified as 1.0 μ m or thicker. However, the thickness may not be flat, then the image may show difference in color or shading.

- The polarity of image is different depend on X-Ray instruments and set up. Please set up your instrument as desired polarity.

Japan Inspection Instruments Manufacturers' Association



3rd. Fl., Kudan Royal Bldg., 3-2-5 Kandajinbo-cho,
Chiyoda-ku, Tokyo 101-0051 Japan

TEL 03-3288-5080 FAX 03-3288-5081

E-mail rttp@jima.jp URL <http://www.jima.jp>