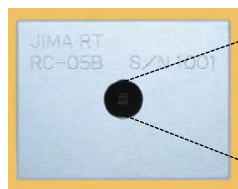


Operation for Micro-chart *JIMA RT RC-05B*

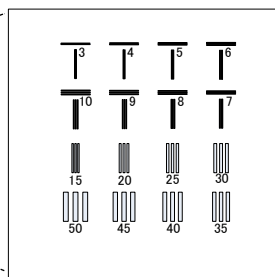
Operation Manual

It is greatly appreciated your purchasing JIMA RT RC-05B. Please read this operations manual well for proper usage and then, please preserve for future reference

Appearance



Patterns Layout



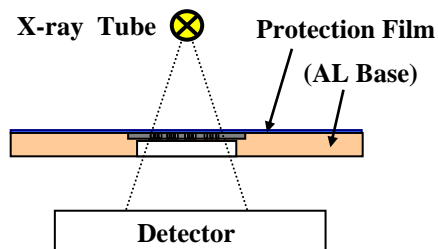
Specifications

1. Line & Space Width : 3, 4, 5, 6, 7, 8, 9, 10 μ m (T : Pattern)
15, 20, 25, 30, 35, 40, 45, 50 μ m (I : Pattern)
2. L/S Width Tolerance : +/- 15% for 3 and 4 μ m, +/- 10% for L/S 5 μ m and above
3. Number of Line: 3 lines (2 spaces) for each set
4. Thickness of Absorption material (Au: Gold) : > 1.0 μ m
5. Protection Film : Thickness : 0.05mm (Polyether Film)
6. Whole Dimensions (W x D x T) : 40 x 30 x 5 mm (Al Base)
7. Chip Size (W x D x T) : 8 x 8 x 0.2 mm (Si)
8. Operating Temperature: + 10 $^{\circ}$ C to + 70 $^{\circ}$ C
9. Protection Plastic Case

[NOTICE] All of the pattern sizes have been measured by SEM at typical points, and the data are shown in the document of certification

Testing Method

Please use the test piece by placing the protection-film side toward X-ray source point as shown in schematic figure at the right.



Notice of Operation

- Do not disassemble the aluminum holder at all.

*The ability of the test sample cannot be maintained.
Once disassembled, it is impossible to assemble again.*

- For storage, avoid a place of high-temperature and high-humidity.

If possible, keep it in desiccators.

- Don't touch the surface of the protective film.

If peeled off, the slit may be damaged.

- Don't physically shock the test sample.

The integrity cannot be maintained after shock.

- Please utilize this test sample to maintain or to control the capability of the X-ray system.

- It is impossible to re-calibrate after sales.

The chip is assembled and protection film is attached after SEM-measurement, so it is impossible to re-measure after assembly.

- This test sample is expendable.

This cannot be repaired nor re-assembly.

- Soon after received, please check all carefully. If any defect, we will replace it. We cannot replace later than one month.

- The thickness of Gold might be not flat. Then the image may show difference in color or shading.

- The polarity of image is different depend on X-Ray instruments and set up. Please set up your instrument as desired polarity.

- If some dust is entered, please use air blower for camera lens.
Do not scratch nor damage inner pattern.

Japan Inspection Instruments Manufacturers' Association



3rd. Fl., Kudan Royal Bldg., 3-2-5 Kandajinbo-cho,
Chiyoda-ku, Tokyo 101-0051 Japan

TEL 03-3288-5080 FAX 03-3288-5081

E-mail rttp@jima.jp URL <http://www.jima.jp>